

NEW AND ORIGINAL IRISH HORNPIPES AND JIGS.

No 251.

E \flat PICCOLO.

F. Mc COY.

"TULLAMORE"



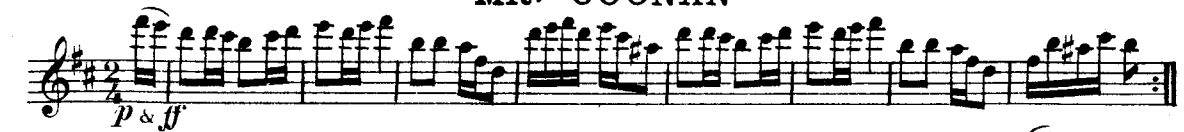
"IRELAND'S EYE"

D.C.



"MR. COONAN"

D.C.



D.C.

NEW AND ORIGINAL IRISH HORNPIPES AND JIGS.

No 251.

1st FLUTE B \flat .

F. M^c COY.

"TULLAMORE"



"IRELAND'S EYE"



"MR. COONAN"



251

NEW AND ORIGINAL IRISH HORNPIPES AND JIGS
TULLAMORE

HENRY POTTER & CO. (DRUMS) LTD. 36 & 38, West St., Charing Cross Road, LONDON, W.C.2.

2nd B♭ FLUTE

F. McCOY

Musical score for 'Tullamore' in 2/4 time, key of D major. The score consists of three staves. The first staff begins with a *p-ff* dynamic. The second staff features a *f-p* dynamic and includes three triplet markings. The piece concludes with a *p* dynamic and a *D.C.* (Da Capo) instruction.

IRELAND'S EYE

Musical score for 'Ireland's Eye' in 6/8 time, key of B♭ major. The score consists of two staves. Both staves begin with a *p-ff* dynamic. The piece concludes with a *D.C.* (Da Capo) instruction.

MR. COONAN

Musical score for 'Mr. Coonan' in 2/4 time, key of D major. The score consists of two staves. Both staves begin with a *p-ff* dynamic. The piece concludes with a *D.C.* (Da Capo) instruction.

NEW AND ORIGINAL IRISH HORNPIPES AND JIGS

251

TULLAMORE

HENRY POTTER & CO. (DRUMS) LTD. 36 & 38, West St., Charing Cross Road, LONDON, W.C.2.

3rd Bb FLUTE

F. McCOY



Musical notation for 'TULLAMORE' in 2/4 time, key of D major. The piece consists of two staves. The first staff begins with a treble clef, a key signature of one sharp (F#), and a 2/4 time signature. It starts with a dynamic marking of *p ff*. The second staff begins with a treble clef, a key signature of one sharp (F#), and a 2/4 time signature. It features a dynamic marking of *ff* at the beginning and *p* later in the piece. The piece concludes with a double bar line and a repeat sign, followed by the initials 'D.C.'.

IRELAND'S EYE



Musical notation for 'IRELAND'S EYE' in 6/8 time, key of D major. The piece consists of two staves. The first staff begins with a treble clef, a key signature of one sharp (F#), and a 6/8 time signature. It starts with a dynamic marking of *p ff*. The second staff begins with a treble clef, a key signature of one sharp (F#), and a 6/8 time signature. It starts with a dynamic marking of *p ff*. The piece concludes with a double bar line and a repeat sign, followed by the initials 'D.C.'.

MR. COONAN



Musical notation for 'MR. COONAN' in 2/4 time, key of D major. The piece consists of two staves. The first staff begins with a treble clef, a key signature of one sharp (F#), and a 2/4 time signature. The second staff begins with a treble clef, a key signature of one sharp (F#), and a 2/4 time signature. The piece concludes with a double bar line and a repeat sign, followed by the initials 'D.C.'.

NEW AND ORIGINAL IRISH HORNPIPES AND JIGS.

No 251.

F FLUTE.

F. Mc COY.

"TULLAMORE"

Musical notation for "TULLAMORE". The piece is in 2/4 time and consists of two staves. The first staff begins with a dynamic marking of *p & ff*. The second staff begins with a dynamic marking of *ff*, followed by a *p* marking. The piece concludes with a double bar line and a repeat sign, and is marked *D.C.* (Da Capo).

"IRELAND'S EYE"

Musical notation for "IRELAND'S EYE". The piece is in 6/8 time and consists of two staves. The first staff begins with a dynamic marking of *p & ff*. The second staff begins with a dynamic marking of *p & ff*. The piece concludes with a double bar line and a repeat sign, and is marked *D.C.* (Da Capo).

"MR. COONAN"

Musical notation for "MR. COONAN". The piece is in 2/4 time and consists of two staves. The first staff begins with a dynamic marking of *p & ff*. The second staff begins with a dynamic marking of *p & ff*. The piece concludes with a double bar line and a repeat sign, and is marked *D.C.* (Da Capo).

251

NEW AND ORIGINAL IRISH HORNPIPES AND JIGS

"TULLAMORE"

H. POTTER & CO. 36 & 38 West St. Charing Cross Road, LONDON. W.C.2.
MANUFACTURERS OF DRUMS: FLUTES: BUGLES: ALSO REPAIRS

E \flat FLUTE

F. McCOY

Musical score for "Tullamore" in E-flat major, 2/4 time. The piece consists of three staves of music. The first staff begins with a double bar line and a repeat sign, followed by a *p-ff* dynamic marking. The second staff contains a triplet of eighth notes. The third staff ends with a double bar line and a repeat sign, followed by a *p* dynamic marking and the initials "D.C." (Da Capo).

IRELANDS EYE

Musical score for "Ireland's Eye" in E-flat major, 6/8 time. The piece consists of two staves of music. The first staff begins with a double bar line and a repeat sign, followed by a *p-ff* dynamic marking. The second staff ends with a double bar line and a repeat sign, followed by a *p-ff* dynamic marking and the initials "D.C." (Da Capo).

MR. COONAN

Musical score for "Mr. Coonan" in E-flat major, 2/4 time. The piece consists of three staves of music. The first staff begins with a double bar line and a repeat sign, followed by a *p-ff* dynamic marking. The second staff contains a triplet of eighth notes. The third staff ends with a double bar line and a repeat sign, followed by a *p-ff* dynamic marking and the initials "D.C." (Da Capo).

251

NEW AND ORIGINAL IRISH HORNPIPES AND JIGS

“TULLAMORE”

H. POTTER & CO. 36 & 38 West St: Charing Cross Road, LONDON. W.C.2.
MANUFACTURERS OF DRUMS : FLUTES : BUGLES : ALSO REPAIRS

B \flat BASS FLUTE

F. McCOY

Musical score for 'Tullamore' in G major, 2/4 time. It consists of three staves. The first staff begins with a treble clef and a key signature of one sharp (F#). The music features a series of eighth and sixteenth notes, with some triplet markings. The second staff includes a dynamic marking of *ff* and a triplet of eighth notes. The third staff concludes with a double bar line and a repeat sign. The initials 'D.C.' are written at the end of the piece.

IRELANDS EYE

Musical score for 'Ireland's Eye' in G major, 6/8 time. It consists of two staves. The first staff begins with a treble clef and a key signature of one sharp (F#). The music is characterized by a steady eighth-note rhythm. The second staff includes a dynamic marking of *p-ff*. The piece ends with a double bar line and a repeat sign. The initials 'D.C.' are written at the end of the piece.

MR. COONAN

Musical score for 'Mr. Coonan' in G major, 2/4 time. It consists of three staves. The first staff begins with a treble clef and a key signature of one sharp (F#). The music features a series of eighth and sixteenth notes. The second staff includes a dynamic marking of *p-ff*. The third staff concludes with a double bar line and a repeat sign. The initials 'D.C.' are written at the end of the piece.

NEW AND ORIGINAL IRISH HORNPIPES AND JIGS.

No 251.

SIDE DRUM.

F. M^c COY.

"TULLAMORE"


Musical notation for "TULLAMORE" side drum piece. It consists of three staves of music. The first staff begins with a treble clef, a 2/4 time signature, and a key signature of one flat (B-flat). The first measure is marked *p & ff*. The second staff contains a repeat sign with a double bar line and a first ending bracket. The second ending is marked *2nd time ff*. The third staff ends with a repeat sign and the instruction *Repeat as often as required.* Below the staff is the marking *D.C.*

"IRELAND'S EYE"

Musical notation for "IRELAND'S EYE" side drum piece. It consists of two staves of music. The first staff begins with a treble clef, a 3/8 time signature, and a key signature of one flat (B-flat). The first measure is marked *p & ff*. The second staff ends with a repeat sign and the instruction *Repeat as often as required.* Below the staff is the marking *D.C.*

"MR. COONAN"

Musical notation for "MR. COONAN" side drum piece. It consists of two staves of music. The first staff begins with a treble clef, a 2/4 time signature, and a key signature of one flat (B-flat). The first measure is marked *p & ff*. The second staff ends with a repeat sign and the instruction *Repeat as often as required.* Below the staff is the marking *D.C.*

HENRY POTTER & CO. only address 36 & 38, West St. Charing  Road, LONDON .W.C.

NEW AND ORIGINAL IRISH HORNPIPES AND JIGS

251

TULLAMORE

HENRY POTTER & CO. (DRUMS) LTD. 36 & 38, West St., Charing Cross Road, LONDON, W.C.2.

BASS DRUM

F. McCOY

Musical notation for the bass drum piece 'Tullamore'. It consists of two staves of music in 2/4 time. The first staff begins with a treble clef, a key signature of one flat (B-flat), and a 2/4 time signature. The first measure contains a quarter rest followed by a quarter note G. The second measure contains a quarter note G, a quarter note A, and a quarter note B. The third measure contains a quarter note G, a quarter note A, and a quarter note B. The fourth measure contains a quarter note G, a quarter note A, and a quarter note B. The fifth measure contains a quarter note G, a quarter note A, and a quarter note B. The sixth measure contains a quarter note G, a quarter note A, and a quarter note B. The seventh measure contains a quarter note G, a quarter note A, and a quarter note B. The eighth measure contains a quarter note G, a quarter note A, and a quarter note B. The piece ends with a double bar line and repeat dots. The dynamic marking *p-ff* is placed below the first measure. The instruction *D.C.* is placed below the end of the second staff.

p-ff

D.C.

Repeat as often as requested

IRELAND'S EYE

Musical notation for the bass drum piece 'Ireland's Eye'. It consists of one staff of music in 2/4 time. The first measure contains a quarter rest followed by a quarter note G. The second measure contains a quarter note G, a quarter note A, and a quarter note B. The third measure contains a quarter note G, a quarter note A, and a quarter note B. The fourth measure contains a quarter note G, a quarter note A, and a quarter note B. The fifth measure contains a quarter note G, a quarter note A, and a quarter note B. The sixth measure contains a quarter note G, a quarter note A, and a quarter note B. The seventh measure contains a quarter note G, a quarter note A, and a quarter note B. The eighth measure contains a quarter note G, a quarter note A, and a quarter note B. The piece ends with a double bar line and repeat dots. The dynamic marking *p-ff* is placed below the first measure. The instruction *D.C.* is placed below the end of the staff.

p-ff

D.C.

Repeat as often as requested

MR. COONAN

Musical notation for the bass drum piece 'Mr. Coonan'. It consists of one staff of music in 2/4 time. The first measure contains a quarter rest followed by a quarter note G. The second measure contains a quarter note G, a quarter note A, and a quarter note B. The third measure contains a quarter note G, a quarter note A, and a quarter note B. The fourth measure contains a quarter note G, a quarter note A, and a quarter note B. The fifth measure contains a quarter note G, a quarter note A, and a quarter note B. The sixth measure contains a quarter note G, a quarter note A, and a quarter note B. The seventh measure contains a quarter note G, a quarter note A, and a quarter note B. The eighth measure contains a quarter note G, a quarter note A, and a quarter note B. The piece ends with a double bar line and repeat dots. The dynamic marking *p-ff* is placed below the first measure. The instruction *D.C.* is placed below the end of the staff.

p-ff

D.C.

Repeat as often as requested