

H. POTTER & CO. 36 & 38 West St: Charing Cross Road, LONDON. W.C.2.
MANUFACTURERS OF DRUMS: FLUTES: BUGLES:

ALSO REPAIRS

E \flat PICCOLO

Arr. D. PARFITT

LORD HER WATCH THY CHURCH IS KEEPING

Musical notation for the first march, 'LORD HER WATCH THY CHURCH IS KEEPING'. It consists of two staves of music in E-flat major and 2/4 time. The melody is written on the upper staff, and the accompaniment is on the lower staff. The piece ends with a repeat sign and a fermata.

YE HOLY ANGELS BRIGHT

Musical notation for the second march, 'YE HOLY ANGELS BRIGHT'. It consists of two staves of music in E-flat major and 2/4 time. The melody is written on the upper staff, and the accompaniment is on the lower staff. The piece ends with a repeat sign and a fermata.

THE WORLD IS VERY EVIL

Musical notation for the third march, 'THE WORLD IS VERY EVIL'. It consists of three staves of music in E-flat major and 2/4 time. The melody is written on the upper staff, and the accompaniment is on the lower two staves. The piece ends with a repeat sign and a fermata.

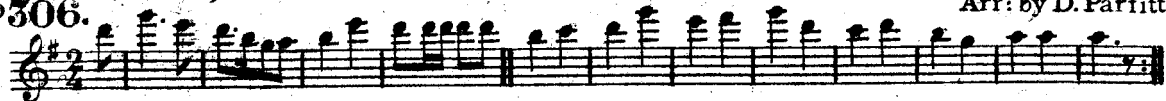
1ST FLUTE.

SUNDAY MARCHES (6TH SET)

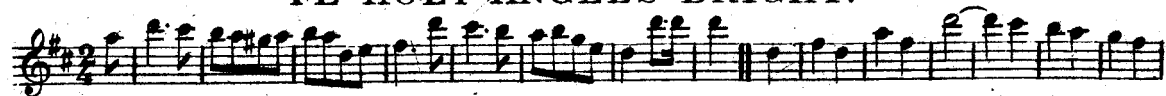
LORD, HER WATCH THY CHURCH IS KEEPING.

No 306.

Arr: by D. Parfitt.



YE HOLY ANGELS BRIGHT.



THE WORLD IS VERY EVIL.



HENRY POTTER & CO. only address 36 & 38, West St: Charing \times Road, LONDON .w. c.

No 306.
2nd FLUTE.

SUNDAY MARCHES (6TH SET)

LORD, HER WATCH THY CHURCH IS KEEPING.

Arr: by D. Parfitt.

The first two staves of music are in 2/4 time with a key signature of one sharp (F#). The first staff begins with a treble clef and a common time signature. The melody consists of eighth and sixteenth notes, with some triplets. The second staff continues the melody, ending with a double bar line and repeat dots.

YE HOLY ANGELS BRIGHT.

The first two staves of music are in 2/4 time with a key signature of two sharps (F# and C#). The first staff begins with a treble clef and a common time signature. The melody features a mix of eighth and sixteenth notes, with some longer note values. The second staff continues the melody, ending with a double bar line and repeat dots.

THE WORLD IS VERY EVIL.

The first two staves of music are in 2/4 time with a key signature of two sharps (F# and C#). The first staff begins with a treble clef and a common time signature. The melody is characterized by a dense texture of sixteenth and thirty-second notes. The second staff continues the melody, ending with a double bar line and repeat dots.

HENRY POTTER & CO. only address 36 & 38, West St: Charing ✕ Road, LONDON. w.c.

No 306.
3rd FLUTE.

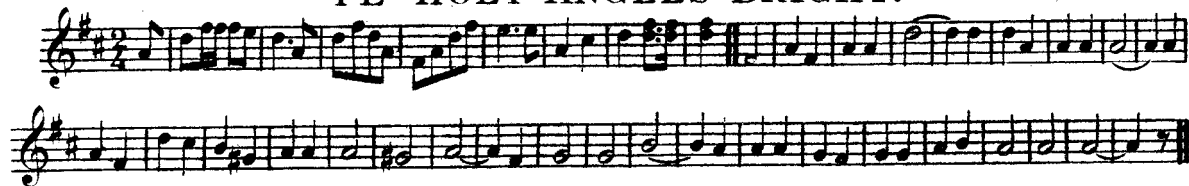
SUNDAY MARCHES (6TH SET)

LORD, HER WATCH THY CHURCH IS KEEPING.

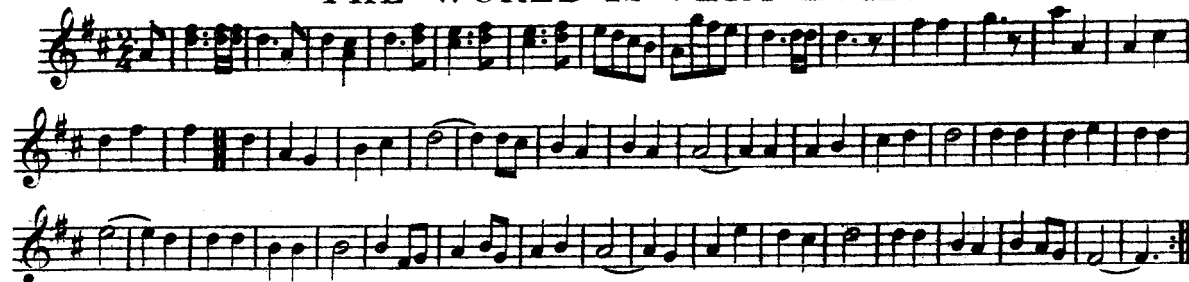
Arr: by D. Parfitt.



YE HOLY ANGELS BRIGHT.



THE WORLD IS VERY EVIL.



HENRY POTTER & CO. only address 36 & 38, West St. Charing ✻ Road, LONDON. w.c.

No 306.
F FLUTE.

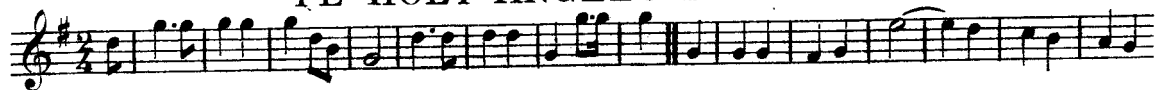
SUNDAY MARCHES (6TH SET)

LORD, HER WATCH THY CHURCH IS KEEPING.

Arr: by D. Parfitt.



YE HOLY ANGELS BRIGHT.



THE WORLD IS VERY EVIL.



HENRY POTTER & CO only address 36 & 38, West St: Charing ✕ Road, LONDON. w.c.

306

SUNDAY MARCHES (6th Set)

H. POTTER & CO. 36 & 38 West St: Charing Cross Road, LONDON. W.C.2.
MANUFACTURERS OF DRUMS: FLUTES: BUGLES: ALSO REPAIRS

E♭ FLUTE

Arr. D. PARFITT

LORD HER WATCH THY CHURCH IS KEEPING

Musical notation for the first piece, consisting of two staves. The key signature is two sharps (F# and C#) and the time signature is 2/4. The melody is written on the top staff, and the accompaniment is on the bottom staff. The piece ends with a double bar line and repeat dots.

YE HOLY ANGELS BRIGHT

Musical notation for the second piece, consisting of two staves. The key signature is two sharps (F# and C#) and the time signature is 2/4. The melody is written on the top staff, and the accompaniment is on the bottom staff. The piece ends with a double bar line and repeat dots.

THE WORLD IS VERY EVIL

Musical notation for the third piece, consisting of three staves. The key signature is two sharps (F# and C#) and the time signature is 2/4. The melody is written on the top staff, and the accompaniment is on the middle and bottom staves. The piece ends with a double bar line and repeat dots.

No 306.

HYMNS FOR MARCHING. (6TH SET.)

LORD, HER WATCH THY CHURCH IS KEEPING.

SIDE DRUM.

Arr: by D. Parfitt.

YE HOLY ANGELS BRIGHT.

THE WORLD IS VERY EVIL.

HENRY POTTER & CO. only address 36 & 38, West St: Charing * Road, LONDON. w.c.

No 306.
BASS DRUM.

SUNDAY MARCHES (6TH SET)

LORD, HER WATCH THY CHURCH IS KEEPING.

Arr: by D. Parfitt.

The first two staves of music are in 2/4 time. The first staff begins with a treble clef, a key signature of one flat (B-flat), and a dynamic marking of *f*. It contains a series of eighth notes, with a double bar line and a *p* dynamic marking in the middle. The second staff continues the melody with eighth notes and includes repeat signs (slashes with dots) at the end.

YE HOLY ANGELS BRIGHT.

The first two staves of music are in 2/4 time. The first staff begins with a treble clef, a key signature of one flat (B-flat), and a dynamic marking of *f*. It contains a series of eighth notes, with a double bar line and a *p* dynamic marking in the middle. The second staff continues the melody with eighth notes and includes repeat signs (slashes with dots) at the end.

THE WORLD IS VERY EVIL.

The first two staves of music are in 2/4 time. The first staff begins with a treble clef, a key signature of one flat (B-flat), and a dynamic marking of *f*. It contains a series of eighth notes, with a double bar line and a *p* dynamic marking in the middle. The second staff continues the melody with eighth notes and includes repeat signs (slashes with dots) at the end.

HENRY POTTER & CO. only address 36 & 38, West St: Charing * Road, LONDON. w.c.