

# MOLLY BAWN.

E♭ PICCOLO.

Arr: by A.T. PENNIKET.

Musical score for Molly Bawn, E♭ Piccolo. The score consists of four staves of music. The first staff begins with a treble clef, a key signature of two sharps (F# and C#), and a 2/4 time signature. It starts with a piano (*p*) dynamic and includes a forte (*f*) dynamic. The second staff contains two first and second endings. The third and fourth staves continue the melodic line with various dynamics including *p* and *f*. The piece concludes with a double bar line and the marking "D.C." (Da Capo).

# THE DEAR LITTLE SHAMROCK.

Musical score for The Dear Little Shamrock, E♭ Piccolo. The score consists of three staves of music. The first staff begins with a treble clef, a key signature of two sharps (F# and C#), and a 2/4 time signature. It starts with a piano (*p*) dynamic and includes a forte (*f*) dynamic. The second and third staves continue the melodic line with various dynamics including *p* and *f*. The piece concludes with a double bar line and the marking "D.C." (Da Capo).

# CHARITY.

Musical score for Charity, E♭ Piccolo. The score consists of three staves of music. The first staff begins with a treble clef, a key signature of two sharps (F# and C#), and a 2/4 time signature. It starts with a piano (*p*) dynamic and includes a forte (*f*) dynamic. The second and third staves contain first and second endings. The piece concludes with a double bar line and a fermata.

# MOLLY BAWN.

1st FLUTE Bb.

Arr: by A.T. PENNIKET.

Published by kind permission of the Editor of the Family Journal.

Musical score for Molly Bawn, 1st Flute Bb. The score consists of four staves of music in G major and 2/4 time. The first staff begins with a piano (*p*) dynamic and ends with a forte (*f*) dynamic. The second staff contains a first and second ending. The third and fourth staves continue the melody with alternating *f* and *p* dynamics. The piece concludes with a *D.C.* (Da Capo) instruction.

# THE DEAR LITTLE SHAMROCK.

Musical score for The Dear Little Shamrock, 1st Flute Bb. The score consists of six staves of music in G major and 2/4 time. The first staff begins with a piano (*p*) dynamic and ends with a forte (*f*) dynamic. The second and third staves continue the melody with alternating *p* and *f* dynamics. The fourth and fifth staves continue the melody with alternating *p* and *f* dynamics. The sixth staff contains a first and second ending. The piece concludes with a *D.C.* (Da Capo) instruction.

# CHARITY.

Musical score for Charity, 1st Flute Bb. The score consists of three staves of music in G major and 2/4 time. The first staff begins with a piano (*p*) dynamic and ends with a forte (*f*) dynamic. The second and third staves continue the melody with alternating *f* and *p* dynamics. The second staff contains a first and second ending. The piece concludes with a *D.C.* (Da Capo) instruction.

Musical score for Molly Bawn, 2nd Flute. The piece is in G major and 2/4 time. It consists of four staves of music. The first staff begins with a piano (*p*) dynamic and ends with a forte (*f*) dynamic. The second staff features a first ending (1.) and a second ending (2.), both marked piano (*p*). The third staff starts with a forte (*f*) dynamic and ends with a piano (*p*) dynamic. The fourth staff concludes with a forte (*f*) dynamic and a double bar line with 'D.C.' (Da Capo) below it.

THE DEAR LITTLE SHAMROCK.

Musical score for The Dear Little Shamrock, 2nd Flute. The piece is in G major and 2/4 time. It consists of four staves of music. The first staff begins with a piano (*p*) dynamic and ends with a forte (*f*) dynamic. The second staff starts with a piano (*p*) dynamic and ends with a forte (*f*) dynamic. The third staff begins with a piano (*p*) dynamic and ends with a forte (*f*) dynamic. The fourth staff concludes with a piano (*p*) dynamic and a double bar line with 'D.C.' (Da Capo) below it.

CHARITY.

Musical score for Charity, 2nd Flute. The piece is in G major and 2/4 time. It consists of three staves of music. The first staff begins with a piano (*p*) dynamic and ends with a forte (*f*) dynamic. The second staff features a first ending (1.) and a second ending (2.), both marked piano (*p*). The third staff starts with a forte (*f*) dynamic and concludes with a double bar line and a fermata, with 'D.C.' (Da Capo) below it.

# MOLLY BAWN.

3<sup>rd</sup> FLUTE.

Arr: by A. T. PENNIKET.

Musical score for Molly Bawn, 3rd Flute part. The piece is in 2/4 time with a key signature of one sharp (F#). The score consists of four staves of music. The first staff begins with a piano (*p*) dynamic and ends with a forte (*f*) dynamic. The second staff includes a first and second ending. The third staff features a forte (*f*) dynamic followed by a piano (*p*) dynamic. The fourth staff concludes with a forte (*f*) dynamic and a *D.C.* (Da Capo) instruction.

# THE DEAR LITTLE SHAMROCK.

Musical score for The Dear Little Shamrock, 3rd Flute part. The piece is in 2/4 time with a key signature of one sharp (F#). The score consists of four staves of music. The first staff starts with a piano (*p*) dynamic and ends with a forte (*f*) dynamic. The second staff begins with a piano (*p*) dynamic and ends with a forte (*f*) dynamic. The third staff starts with a piano (*p*) dynamic and ends with a forte (*f*) dynamic. The fourth staff concludes with a piano (*p*) dynamic and a *D.C.* (Da Capo) instruction.

# CHARITY.

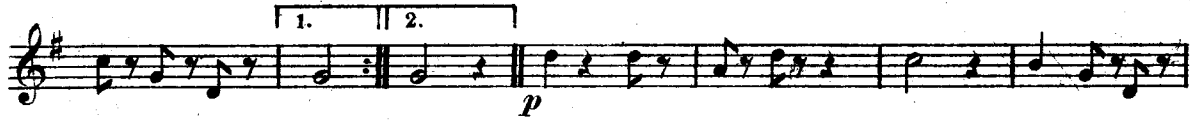
Musical score for Charity, 3rd Flute part. The piece is in 2/4 time with a key signature of one sharp (F#). The score consists of three staves of music. The first staff features a melodic line with slurs. The second staff includes a first and second ending. The third staff concludes with a *D.C.* (Da Capo) instruction.

# MOLLY BAWN.

N<sup>o</sup> 309.

F FLUTE.

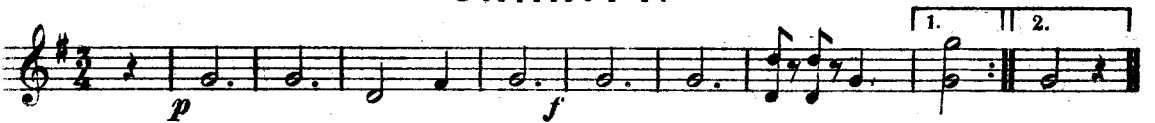
Arr: by A.T. PENNIKET.



## THE DEAR LITTLE SHAMROCK.



## CHARITY.



RETREATS.

NO 309.

# MOLLY BAWN.

E♭ FLUTE.

Arr: by A.T. PENNIKET.

Musical score for Molly Bawn, E♭ Flute. The piece is in 2/4 time with a key signature of two sharps (F# and C#). It begins with a piano (*p*) dynamic and features a first ending and a second ending. The score consists of three staves of music.

## THE DEAR LITTLE SHAMROCK.

D.C.

Musical score for The Dear Little Shamrock, E♭ Flute. The piece is in 2/4 time with a key signature of two sharps (F# and C#). It begins with a piano (*p*) dynamic and features a first ending and a second ending. The score consists of three staves of music.

## CHARITY.

D.C.

Musical score for Charity, E♭ Flute. The piece is in 2/4 time with a key signature of two sharps (F# and C#). It begins with a piano (*p*) dynamic and features a first ending and a second ending. The score consists of two staves of music.

HENRY POTTER & CO. only address 36 & 38, West St: Charing ✕ Road, LONDON. w.c.

D.C.

# MOLLY BAWN.

SIDE DRUM.

Arr: by A.T. PENNIKET.

Musical score for Molly Bawn, Side Drum. The score consists of five staves of music in 2/4 time. The first staff begins with a piano (*p*) dynamic and ends with a forte (*f*) dynamic. The second staff ends with a piano (*p*) dynamic. The third staff ends with a forte (*f*) dynamic. The fourth staff ends with a piano (*p*) dynamic. The fifth staff ends with a forte (*f*) dynamic and is marked D.C. (Da Capo).

# THE DEAR LITTLE SHAMROCK.

Musical score for The Dear Little Shamrock, Side Drum. The score consists of seven staves of music in 2/4 time. The first staff begins with a piano (*p*) dynamic and ends with a forte (*f*) dynamic. The second staff ends with a piano (*p*) dynamic. The third staff ends with a forte (*f*) dynamic. The fourth staff ends with a forte (*f*) dynamic. The fifth staff begins with a piano (*p*) dynamic and ends with a forte (*f*) dynamic. The sixth staff ends with a forte (*f*) dynamic. The seventh staff ends with a forte (*f*) dynamic and is marked D.C. (Da Capo). The score includes first and second endings.

# CHARITY.

Musical score for Charity, Side Drum. The score consists of two staves of music in 2/4 time. The first staff begins with a piano (*p*) dynamic and ends with a forte (*f*) dynamic. The second staff begins with a piano (*p*) dynamic and ends with a forte (*f*) dynamic and is marked D.C. (Da Capo).

# MOLLY BAWN.

BASS DRUM.

Arr: by A. T. PENNIKET.

Musical score for Molly Bawn, Bass Drum. It consists of four staves of music. The first staff starts with 'Two sticks.' and 'p' dynamics, followed by 'f'. The second staff has 'One stick.' and 'p' dynamics, ending with 'f'. The third staff has 'Two sticks.' and 'p' dynamics, ending with 'f'. The fourth staff has 'One stick.' and 'f' dynamics, ending with a 'D.C.' (Da Capo) marking.

# THE DEAR LITTLE SHAMROCK.

Musical score for The Dear Little Shamrock, Bass Drum. It consists of six staves of music. The first staff starts with 'p' dynamics and 'Two sticks.', followed by 'f'. The second staff has 'p' dynamics. The third staff has 'f' dynamics. The fourth staff has 'p' dynamics and a circled cross symbol. The fifth staff has 'f' dynamics. The sixth staff has 'p' dynamics, 'f' dynamics, and a circled cross symbol. It ends with a 'D.C.' (Da Capo) marking.

# CHARITY.

Cross sticks over top of Drums.

Musical score for Charity, Bass Drum. It consists of three staves of music. The first staff has 'f' dynamics. The second staff has 'Two sticks.' and 'p' dynamics. The third staff has 'Two sticks.' and 'f' dynamics, ending with a 'D.C.' (Da Capo) marking.