

WALTZ "FAIRY GLEN"

No 313.

E♭ PICCOLO.

Arr: by A.J. DUFFIELD.

1. *f.*

The first system consists of four staves of music. The first staff begins with a treble clef, a key signature of one sharp (F#), and a 2/4 time signature. The music is marked with a dynamic of *f.* and a tempo marking of *S.* (Squillo). The melody is written on the first staff, with accompaniment on the second and third staves. The fourth staff contains the word "FINE." and the instruction "D.C. S." (Da Capo Squillo).

2.

The second system consists of four staves of music. The first staff begins with a treble clef, a key signature of one sharp (F#), and a 2/4 time signature. The music is marked with a dynamic of *f.* and a tempo marking of *S.* (Squillo). The melody is written on the first staff, with accompaniment on the second and third staves. The fourth staff contains the word "D.C." (Da Capo).

3.

The third system consists of four staves of music. The first staff begins with a treble clef, a key signature of one sharp (F#), and a 2/4 time signature. The music is marked with a dynamic of *f.* and a tempo marking of *S.* (Squillo). The melody is written on the first staff, with accompaniment on the second and third staves. The fourth staff contains the word "D.C." (Da Capo).

WALTZ "FAIRY GLEN"

No 313.

1st FLUTE Bb.

Arr. by A.J. DUFFIELD.

1.

Musical notation for the first system, including a melody line and two accompaniment lines. The key signature has one sharp (F#) and the time signature is 3/4. The melody begins with a treble clef and a key signature of one sharp. The first measure contains a treble clef, a key signature of one sharp, and a 3/4 time signature. The melody line starts with a quarter note G4, followed by quarter notes A4, B4, and C5. The accompaniment lines provide harmonic support with chords and rhythmic patterns.

FINE.

D.C. &

2.

Musical notation for the second system, including a melody line and two accompaniment lines. The melody line continues from the first system. The accompaniment lines feature a steady rhythmic pattern. The system concludes with a first ending bracket and a second ending bracket, both leading to a double bar line.

D.C.

3.

Musical notation for the third system, including a melody line and two accompaniment lines. The melody line continues with a series of eighth notes. The accompaniment lines maintain the harmonic structure. The system concludes with a first ending bracket and a second ending bracket, both leading to a double bar line.

D.C.

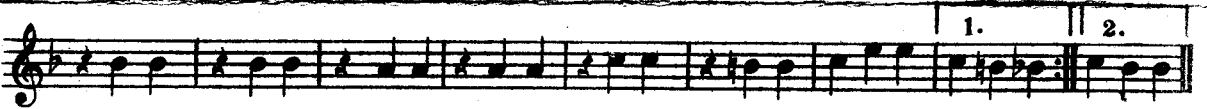
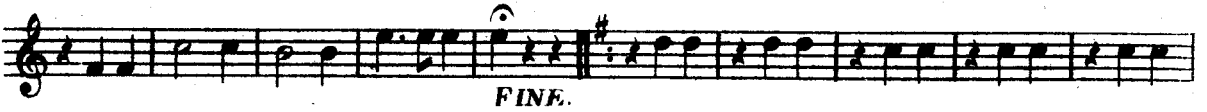
No 1.

WALTZ "FAIRY GLEN"

No 313.

3rd FLUTE B \flat .

Arr: by A. J. DUFFIELD.

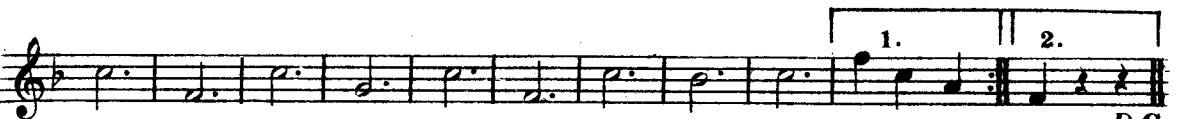
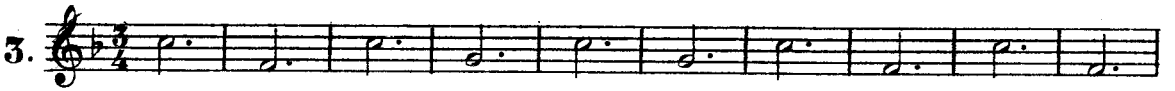
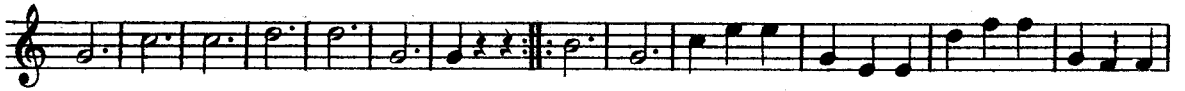
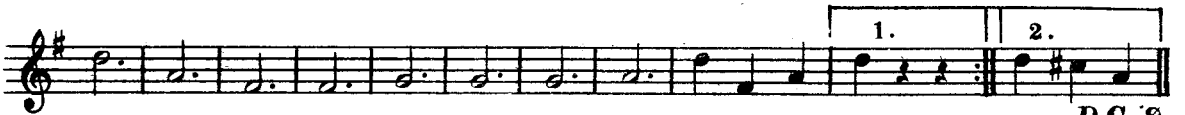
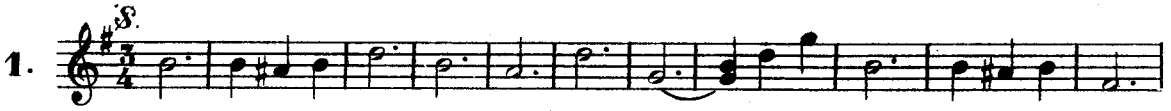


WALTZ "FAIRY GLEN"

No 313.

E♭ FLUTE.

Arr: by A.J. DUFFIELD.



313

FAIRY GLEN

WALTZ

H. POTTER & CO. 36 & 38 West St. Charing Cross Road, LONDON. W.C.2.
 MANUFACTURERS OF DRUMS: FLUTES: BUGLES:
 ALSO REPAIRS

B \flat BASS FLUTE

Arr. A. J. DUFFIELD

No. 1

Fine

D.C.

No. 2

D.C.

No. 3

D.C. to No. 1

WALTZ "FAIRY GLEN"

No 313.

SIDE DRUM.

Arr. by A.J. DUFFIELD.

1. 



2. 





3. 





WALTZ "FAIRY GLEN"

No 313.

BASS DRUM.

Arr: by A.J. DUFFIELD.

1. *S.*

FINE

2.

1. 2.

D.C.

3.

D.C.