

No 289.

E♭ PICCOLO.

For Retreat.

RETREAT AND TATTOO.

Eileen Aroon.

Arr: by A.J.DUFFIELD.

Musical staff for Eileen Aroon, featuring a treble clef, a key signature of one sharp (F#), and a 2/4 time signature. The melody consists of a series of eighth and sixteenth notes, with some triplets.

For Retreat.

On the Banks of Allan Water.

D.C.

Musical staff for On the Banks of Allan Water, featuring a treble clef, a key signature of one sharp (F#), and a 2/4 time signature. The melody is characterized by a steady eighth-note pattern.

Musical staff for Sweet Saviour, featuring a treble clef, a key signature of one sharp (F#), and a 2/4 time signature. The melody is a simple, rhythmic eighth-note pattern.

For Tattoo.

Sweet Saviour bless us ere we go.

D.C.

Musical staff for Abide With Me, featuring a treble clef, a key signature of one sharp (F#), and a 2/4 time signature. The melody is a simple, rhythmic eighth-note pattern.

For Tattoo.

Abide With Me.

D.C.

Musical staff for The Vespers, featuring a treble clef, a key signature of one sharp (F#), and a 2/4 time signature. The melody is a simple, rhythmic eighth-note pattern.

"At Tattoo beating"

The Vespers.

D.C.

Musical staff for The Vespers (slow), featuring a treble clef, a key signature of one sharp (F#), and a 2/4 time signature. The tempo is marked 'Slow'. The melody is a simple, rhythmic eighth-note pattern.

Musical staff for The Vespers (rall.), featuring a treble clef, a key signature of one sharp (F#), and a 2/4 time signature. The tempo is marked 'rall.'. The melody is a simple, rhythmic eighth-note pattern.

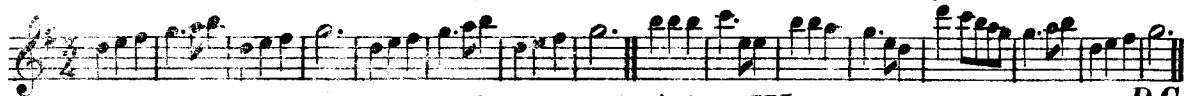
No 289

RETREAT AND TATTOO.

1st FLUTES.

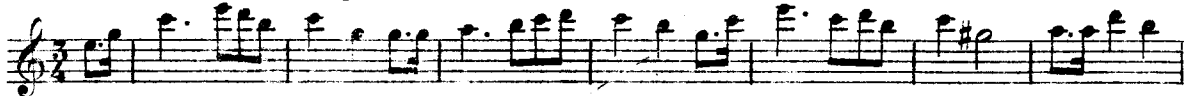
Eileen Aroon.

Arr: by A.J. DUFFIELD.



On the Banks of Allan Water.

D.C.



Sweet Saviour bless us ere we go.

D.C.



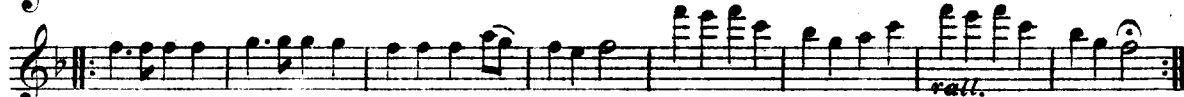
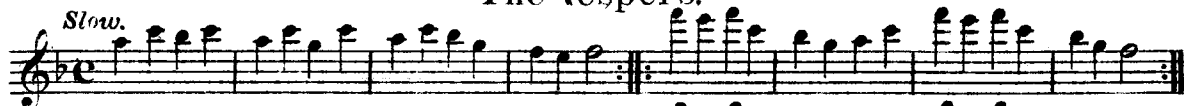
Abide With Me.

D.C.



The Vespers.

D.C.



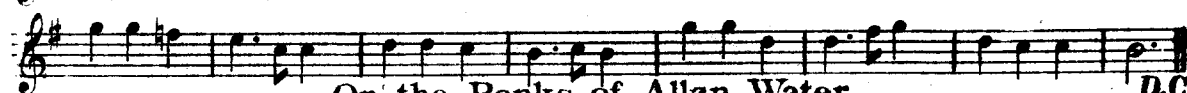
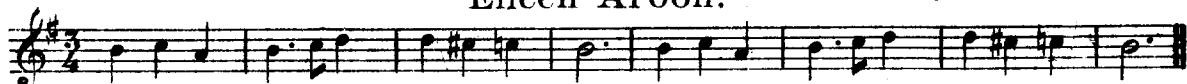
NO 289.

RETREAT AND TATTOO.

2nd FLUTES.

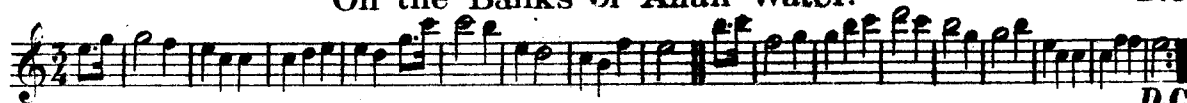
Eileen Aroon.

Arr: by A.J. DUFFIELD.



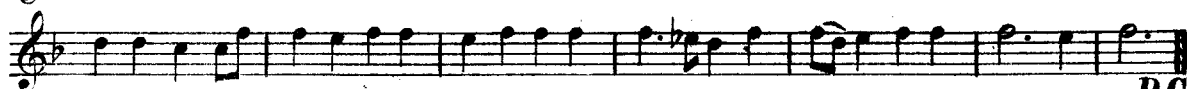
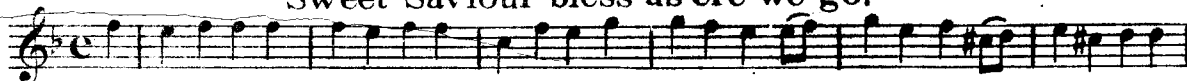
On the Banks of Allan Water.

D.C.



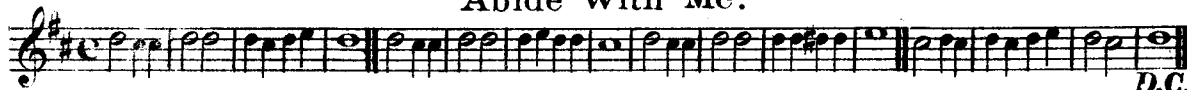
D.C.

Sweet Saviour bless us ere we go.



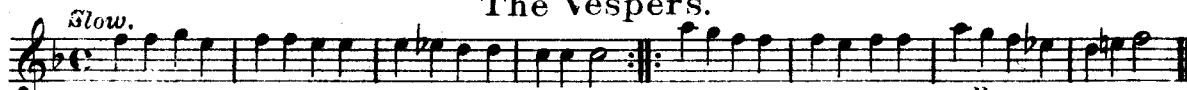
D.C.

Abide With Me.



D.C.

The Vespers.



HENRY POTTER & CO. only address 36 & 38, West St. Charing * Road, LONDON. w.c.

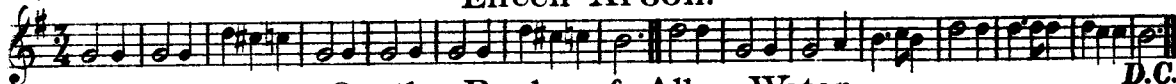
No 289.

RETREAT AND TATTOO.

3rd FLUTES.

Eileen Aroon.

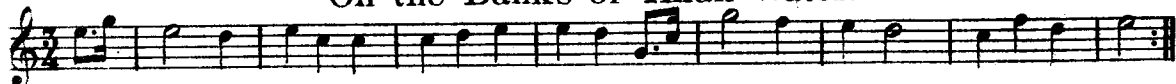
Arr: by A. J. DUFFIELD.



Musical notation for the first piece, Eileen Aroon, in 2/4 time with a key signature of one sharp (F#). The melody is written on a single staff.

On the Banks of Allan Water.

D.C.



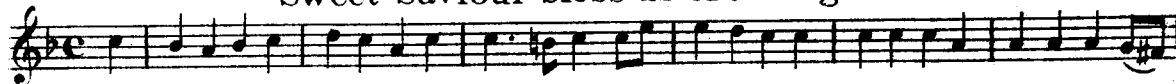
Musical notation for the second piece, On the Banks of Allan Water, in 2/4 time with a key signature of one sharp (F#). The melody is written on a single staff.



Musical notation for the third piece, Sweet Saviour, in 2/4 time with a key signature of one sharp (F#). The melody is written on a single staff.

Sweet Saviour bless us ere we go.

D.C.



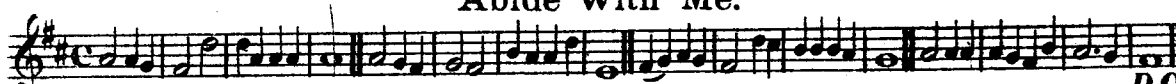
Musical notation for the third piece, Sweet Saviour, in 2/4 time with a key signature of one sharp (F#). The melody is written on a single staff.



Musical notation for the fourth piece, Abide With Me, in 2/4 time with a key signature of one sharp (F#). The melody is written on a single staff.

Abide With Me.


D.C.



Musical notation for the fourth piece, Abide With Me, in 2/4 time with a key signature of one sharp (F#). The melody is written on a single staff.

The Vespers.

D.C.



Musical notation for the fifth piece, The Vespers, in 2/4 time with a key signature of one sharp (F#). The melody is written on a single staff.

Slow.



Musical notation for the fifth piece, The Vespers, in 2/4 time with a key signature of one sharp (F#). The melody is written on a single staff.

rall.

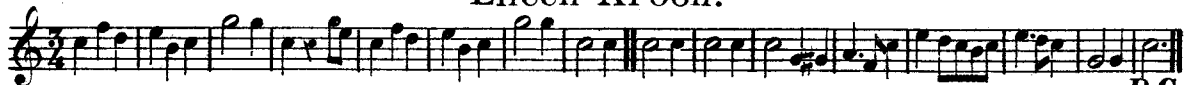
NO 289.

RETREAT AND TATTOO.

F FLUTES.

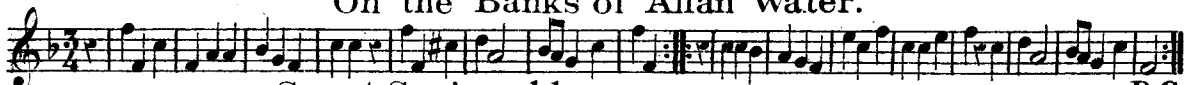
Eileen Aroon.

Arr: by A. J. DUFFIELD.



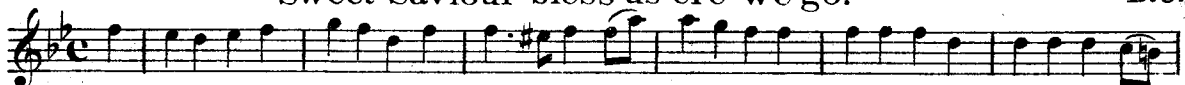
On the Banks of Allan Water.

D.C.



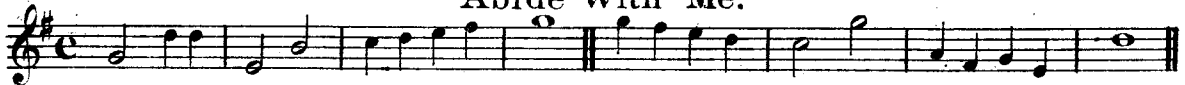
Sweet Saviour bless us ere we go.

D.C.



Abide With Me.

D.C.



D.C.

Slow.

The Vespers.



No 289.

RETREAT AND TATTOO.

E♭ FLUTES.

Eileen Aroon.

Arr: by A.J. DUFFIELD.

Two staves of musical notation for the piece 'Eileen Aroon'. The first staff is in treble clef with a key signature of one sharp (F#) and a 2/2 time signature. The second staff is in treble clef with a key signature of one sharp (F#) and a 2/2 time signature. The music consists of a series of eighth and sixteenth notes.

On the Banks of Allan Water.

D.C.

One staff of musical notation for the piece 'On the Banks of Allan Water'. The staff is in treble clef with a key signature of one sharp (F#) and a 2/2 time signature. The music features a mix of eighth and sixteenth notes.

Sweet Saviour bless us ere we go.

D.C.

One staff of musical notation for the piece 'Sweet Saviour bless us ere we go'. The staff is in treble clef with a key signature of one sharp (F#) and a 2/2 time signature. The music is characterized by a steady eighth-note pattern.

Abide With Me.

D.C.

Top staff of musical notation for the piece 'Abide With Me'. The staff is in treble clef with a key signature of one sharp (F#) and a common time signature (C). The music features a series of eighth notes.

Bottom staff of musical notation for the piece 'Abide With Me'. The staff is in treble clef with a key signature of one sharp (F#) and a common time signature (C). The music features a series of eighth notes.

D.C.

Slow.

The Vespers.

Top staff of musical notation for the piece 'The Vespers'. The staff is in treble clef with a key signature of one sharp (F#) and a common time signature (C). The music features a series of eighth notes.

Bottom staff of musical notation for the piece 'The Vespers'. The staff is in treble clef with a key signature of one sharp (F#) and a common time signature (C). The music features a series of eighth notes, with a *rall.* marking above the final few notes.

HENRY POTTER & CO. only address 36 & 38, West St: Charing Road, LONDON. w.c.

289

RETREAT AND TATTOO
EILEEN AROON

H. POTTER & CO. 36 & 38 West St: Charing Cross Road, LONDON. W.C.2.
MANUFACTURERS OF DRUMS: FLUTES: BUGLES: ALSO REPAIRS

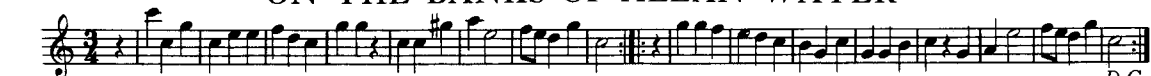
B \flat BASS FLUTE

Arr. A.J. DUFFIELD



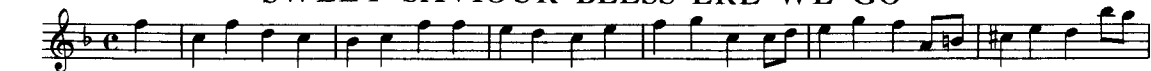
ON THE BANKS OF ALLAN WATER

D.C.



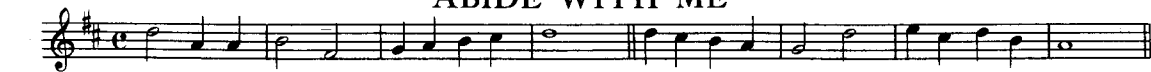
SWEET SAVIOUR BLESS ERE WE GO

D.C.

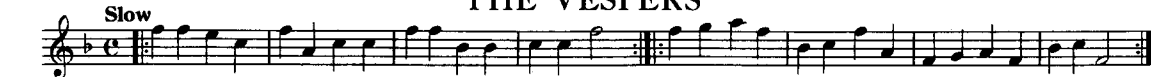


D.C.

ABIDE WITH ME



THE VESPERS



rall.

No 289.

RETREAT AND TATTOO.

SIDE DRUM.

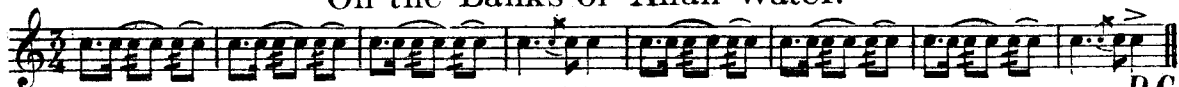
Eileen Aroon.

Arr: by A.J.DUFFIELD.



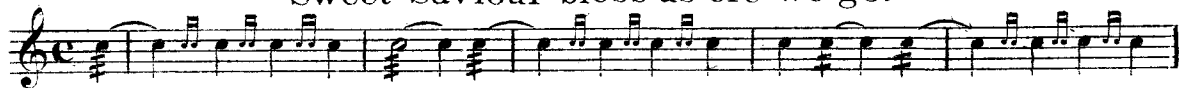
D.C.

On the Banks of Allan Water.



D.C.

Sweet Saviour bless us ere we go.



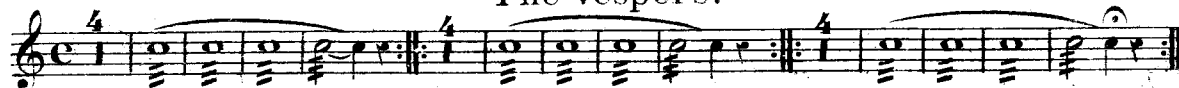
D.C.

Abide With Me.



D.C.

The Vespers.



HENRY POTTER & CO, only address 36 & 38, West St: Charing * Road, LONDON. w.c.

NO 289.

RETREAT AND TATTOO.

BASS DRUM.

Eileen Aroon.

Arr: by A.J. DUFFIELD.

Musical notation for the first piece, 'Eileen Aroon', in bass clef with a 3/4 time signature. The notation consists of a single staff with various dynamic markings: *f* > *p*, > *p*, *p*, *f*, > *f* > *p*, *f* > *p*, *f* > *p*, *f* > > *D.C.*

On the Banks of Allan Water.

Musical notation for the second piece, 'On the Banks of Allan Water', in bass clef with a 3/4 time signature. The notation consists of a single staff with various dynamic markings: *f* > *p*, > *p*, *p*, *f*, > *f* > *p*, *f* > *p*, *f* > *p*, *f* > > *D.C.*

Sweet Saviour bless us ere we go.

Musical notation for the third piece, 'Sweet Saviour bless us ere we go', in bass clef with a common time signature. The notation consists of a single staff with a *trill.* marking and ends with *D.C.*

Abide With Me.

Musical notation for the fourth piece, 'Abide With Me', in bass clef with a common time signature. The notation consists of a single staff with accent (>) markings.

Musical notation for the fourth piece, 'Abide With Me', in bass clef with a common time signature. The notation consists of a single staff with accent (>) markings and ends with *D.C.*

The Vespers.

Musical notation for the fifth piece, 'The Vespers', in bass clef with a common time signature. The notation consists of a single staff with dynamic markings *ppp-ff* and *pp-ff*.

Musical notation for the fifth piece, 'The Vespers', in bass clef with a common time signature. The notation consists of a single staff.