

RETREAT.
No 269.

"CARNATION"

E♭ PICCOLO.

H. W. D. HUNT.
Arr: by A. F. PENNIKET.
loco.

Musical score for "Carnation" in E-flat major, 2/4 time. The piece consists of two staves. The first staff begins with a *p* dynamic and a *loco.* marking, followed by a *ff* dynamic. The second staff also begins with a *p* dynamic and a *ff* dynamic, and concludes with the instruction "D.C. ad lib."

RETREAT.

"BLUE BELLS"

Musical score for "Blue Bells" in E-flat major, 2/4 time. The piece consists of two staves. The first staff begins with a *p* dynamic and a *ff* dynamic. The second staff begins with a *p* dynamic and a *ff* dynamic, and concludes with the instruction "D.C. ad lib."

RETREAT.

"HYACINTH"

Musical score for "Hyacinth" in E-flat major, 2/4 time. The piece consists of two staves. The first staff begins with a *p* dynamic and a *loco.* marking, followed by a *ff* dynamic. The second staff begins with a *p* dynamic and a *loco.* marking, followed by a *ff* dynamic, and concludes with the instruction "D.C. ad lib."

HENRY POTTER & CO. only address 36 & 38, West St. Charing * Road, LONDON. W. C.

RETREAT.

NO 269.

"CARNATION"

1st FLUTE Bb.

H. W. D. HUNT.

Arr: by A. F. PENNIKET.

Musical score for "Carnation" in 2/4 time, key of D major. The score consists of two staves. The first staff begins with a piano (*p*) dynamic and a forte (*f*) dynamic. The second staff begins with a piano (*p*) dynamic and ends with the instruction "D.C. ad lib.".

RETREAT.


"BLUE BELLS"

Musical score for "Blue Bells" in 2/4 time, key of D major. The score consists of two staves. The first staff begins with a piano (*p*) dynamic and a forte (*f*) dynamic. The second staff begins with a piano (*p*) dynamic and ends with the instruction "D.C. ad lib.".

RETREAT.

"HYACINTH"

Musical score for "Hyacinth" in 2/4 time, key of D major. The score consists of two staves. The first staff begins with a piano (*p*) dynamic and a forte (*f*) dynamic. The second staff begins with a piano (*p*) dynamic and ends with the instruction "D.C. ad lib.".

HENRY POTTER & CO. only address 36 & 38, West St: Charing  Road, LONDON. W.C.

RETREAT.

N^o 269.

"CARNATION"

2nd FLUTE B \flat .

H. W. D. HUNT.

Musical score for "Carnation" for 2nd Flute B \flat . The score consists of two staves. The first staff begins with a treble clef, a key signature of one sharp (F#), and a 2/4 time signature. It starts with a *p* dynamic and a repeat sign, followed by a *ff* dynamic. The second staff continues the melody with a *p* dynamic and a repeat sign, ending with a *ff* dynamic and the instruction "D.C. ad lib."

RETREAT.

"BLUE BELLS"

Musical score for "Blue Bells" for 2nd Flute B \flat . The score consists of two staves. The first staff begins with a treble clef, a key signature of one sharp (F#), and a 2/4 time signature. It starts with a *p* dynamic and a repeat sign, followed by a *ff* dynamic. The second staff continues the melody with a *p* dynamic and a repeat sign, ending with a *ff* dynamic and the instruction "D.C. ad lib."

RETREAT.

"HYACINTH"

Musical score for "Hyacinth" for 2nd Flute B \flat . The score consists of two staves. The first staff begins with a treble clef, a key signature of one sharp (F#), and a 2/4 time signature. It starts with a *p* dynamic and a repeat sign, followed by a *ff* dynamic. The second staff continues the melody with a *p* dynamic and a repeat sign, ending with a *ff* dynamic and the instruction "D.C. ad lib."

HENRY POTTER & CO. only address 36 & 38, West St: Charing \times Road, LONDON. W. C.

RETREAT.

Nº 269.

"CARNATION"

3rd FLUTE Bb.

H. W. D. HUNT.



RETREAT.

"BLUE BELLS"



RETREAT.

"HYACINTH"



HENRY POTTER & CO. only address 36 & 38, West St: Charing \times Road, LONDON. W.C.

RETREAT.

№ 269.

"CARNATION"

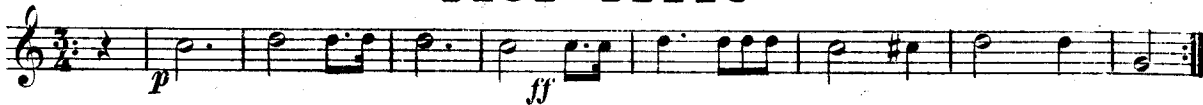
F FLUTE.

H.W. D. HUNT.



RETREAT.

"BLUE BELLS"



RETREAT.

"HYACINTH"



HENRY POTTER & CO. only address 36 & 38, West St. Charing \times Road, LONDON. W.C.

RETREAT.

"CARNATION"

Nº 269.

E♭ FLUTE.

H. W. D. HUNT.



D.C. ad lib.

RETREAT.

"BLUE BELLS"




D.C. ad lib.

RETREAT.

"HYACINTH"



D.C. ad lib.

HENRY POTTER & CO. only address 36 & 38, West Street, Charing  Road, LONDON. W.C.

RETREAT.

"CARNATION"

Nº 269.

SIDE DRUM.

H. W. D. HUNT.

Musical score for "Carnation" in 2/4 time. The first staff begins with a piano (*p*) dynamic and a half note rest, followed by a series of eighth notes. The second staff begins with a pianissimo (*pp*) dynamic and a half note rest, followed by a series of eighth notes. The piece concludes with a double bar line and repeat dots. The instruction "D.C. ad lib." is written below the second staff.

RETREAT.


"BLUE BELLS"

Musical score for "Blue Bells" in 2/4 time. The first staff begins with a pianissimo (*pp*) dynamic and a half note rest, followed by a series of eighth notes. The second staff begins with a pianissimo (*pp*) dynamic and a half note rest, followed by a series of eighth notes with plus signs (+) above them. The piece concludes with a double bar line and repeat dots. The instruction "D.C. ad lib." is written below the second staff.

RETREAT.

"HYACINTH"

Musical score for "Hyacinth" in 2/4 time. The first staff begins with a pianissimo (*pp*) dynamic and a half note rest, followed by a series of eighth notes. The second staff begins with a pianissimo (*pp*) dynamic and a half note rest, followed by a series of eighth notes with slash marks (/) above them. The piece concludes with a double bar line and repeat dots. The instruction "D.C. ad lib." is written below the second staff.

HENRY POTTER & CO. only address 36 & 38, West St: Charing  Road, LONDON. w.c.

RETREAT.

NO 269.

"CARNATION"

BASS DRUM.

H. W. D. HUNT.

Musical notation for the first staff of 'Carnation'. It is in bass clef with a 7/4 time signature. The first measure is marked *p*. The rest of the staff is marked *ff* 2 Sticks.

Musical notation for the second staff of 'Carnation'. It is in bass clef with a 7/4 time signature. The first measure is marked *pp*. The rest of the staff is marked *ff* and ends with 'D.C. ad lib.'

RETREAT.

"BLUE BELLS"

Musical notation for the first staff of 'Blue Bells'. It is in bass clef with a 7/4 time signature. The first measure is marked *pp*. The rest of the staff is marked *ff*.

Musical notation for the second staff of 'Blue Bells'. It is in bass clef with a 7/4 time signature. The first measure is marked *pp*. The rest of the staff is marked *ff* and ends with 'D.C. ad lib.'

RETREAT.

"HYACINTH"

Musical notation for the first staff of 'Hyacinth'. It is in bass clef with a 7/4 time signature. The first measure is marked *pp*. The rest of the staff is marked *ff* 2 Sticks.

Musical notation for the second staff of 'Hyacinth'. It is in bass clef with a 7/4 time signature. The first measure is marked *pp*. The rest of the staff is marked *ff* 2 Sticks and ends with 'D.C. ad lib.'