

RETREATS.  
No 101.  
Solo.

# "SWISS AIR"

E♭ PICCOLO.

F. M<sup>c</sup> COY.

Musical notation for the first piece, "SWISS AIR". It consists of two staves of music. The first staff begins with a treble clef, a key signature of one sharp (F#), and a 2/4 time signature. The melody is characterized by rapid sixteenth-note passages. The piece concludes with two first and second endings. The first ending leads back to the beginning, and the second ending concludes the piece. The notation includes various musical symbols such as slurs, accents, and repeat signs.

# "FAREWELL TO LOCHABER"

D.C.

Musical notation for the second piece, "FAREWELL TO LOCHABER". It consists of three staves of music. The first staff begins with a treble clef, a key signature of one sharp (F#), and a 2/4 time signature. The melody is characterized by rapid sixteenth-note passages. The piece concludes with two first and second endings. The first ending leads back to the beginning, and the second ending concludes the piece. The notation includes various musical symbols such as slurs, accents, and repeat signs.

# "MINUET"

D.C.

Musical notation for the third piece, "MINUET". It consists of two staves of music. The first staff begins with a treble clef, a key signature of one sharp (F#), and a 3/4 time signature. The melody is characterized by rapid sixteenth-note passages. The piece concludes with two first and second endings. The first ending leads back to the beginning, and the second ending concludes the piece. The notation includes various musical symbols such as slurs, accents, and repeat signs.

Henry Potter & C<sup>o</sup> only address 30, Charing Cross, London. S. W.

D.C.S

RETREATS.

No 101.

# "SWISS AIR"

1<sup>st</sup> FLUTE B $\flat$ .

F. M $\text{c}$  COY.

Musical notation for the first piece, 'SWISS AIR'. It consists of two staves. The top staff is in treble clef with a key signature of one flat and a 2/4 time signature. The bottom staff is in bass clef with a key signature of one flat and a 2/4 time signature. The music features a melody with eighth and sixteenth notes, often beamed together. There are first and second endings at the end of the piece, with a repeat sign before the first ending.

# "FAREWELL TO LOCHABER"

D.C.

Musical notation for the second piece, 'FAREWELL TO LOCHABER'. It consists of three staves. The top staff is in treble clef with a key signature of one flat and a 2/4 time signature. The middle and bottom staves are in bass clef with a key signature of one flat and a 2/4 time signature. The music features a melody with eighth and sixteenth notes, often beamed together. There are first and second endings at the end of the piece, with a repeat sign before the first ending.

# "MINUET"

D.C.

Musical notation for the third piece, 'MINUET'. It consists of two staves. The top staff is in treble clef with a key signature of one sharp and a 2/4 time signature. The bottom staff is in bass clef with a key signature of one sharp and a 2/4 time signature. The music features a melody with eighth and sixteenth notes, often beamed together. There are first and second endings at the end of the piece, with a repeat sign before the first ending and a 'last' marking at the end.

Henry Potter & C $\text{o}$  only address 36/38, West St: Charing  $\times$  Road, London. D.C.S.

RETREATS.

No 101.

# "SWISS AIR"

2<sup>nd</sup> FLUTE B $\flat$ .

F. M $\text{c}$  COY.

The first two staves of music for "SWISS AIR". The first staff is in treble clef with a key signature of one flat and a 2/4 time signature. It contains a melody with a repeat sign and two endings labeled "1." and "2.". The second staff is in bass clef with a key signature of one flat and a 2/4 time signature, providing a bass line with a repeat sign and two endings labeled "1." and "2.". The piece concludes with the instruction "D.C." (Da Capo).

# "FAREWELL TO LOCHABER"

The first three staves of music for "FAREWELL TO LOCHABER". The first staff is in treble clef with a key signature of one flat and a 2/4 time signature, featuring a melody with a repeat sign and two endings labeled "1." and "2.". The second staff is in bass clef with a key signature of one flat and a 2/4 time signature, providing a bass line with a repeat sign. The third staff is in treble clef with a key signature of one flat and a 2/4 time signature, continuing the melody with a repeat sign and a final ending labeled "last.". The piece concludes with the instruction "D.C." (Da Capo).

# "MINUET"

The first two staves of music for "MINUET". The first staff is in treble clef with a key signature of two sharps and a 2/4 time signature, featuring a melody with a repeat sign and two endings labeled "1." and "2.". The second staff is in bass clef with a key signature of two sharps and a 2/4 time signature, providing a bass line with a repeat sign and two endings labeled "1." and "2.". The piece concludes with the instruction "D.C." (Da Capo).

Henry Potter & C $\text{o}$  only address 30, Charing Cross, London. S. W.

RETREATS.

N<sup>o</sup> 101.

# "SWISS AIR"

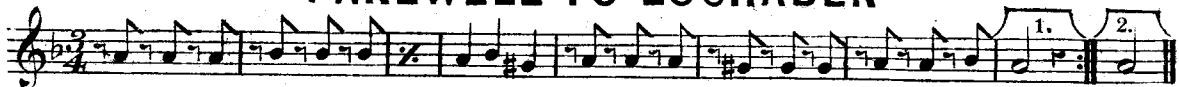
3<sup>rd</sup> FLUTE B $\flat$

F. M<sup>c</sup> COY.



# "FAREWELL TO LOCHABER"

D.C.



D.C.

# "MINUET"



D.C.

RETREATS.

Nº 101.

# "SWISS AIR"

F FLUTE.

F. MC COY.

Musical notation for "SWISS AIR" in F major, 2/4 time. The piece consists of two staves. The first staff begins with a treble clef, a key signature of one flat (F major), and a 2/4 time signature. The melody is characterized by eighth-note patterns. The second staff continues the melody and includes first and second endings, marked "1." and "2." respectively. The piece concludes with a double bar line and the instruction "D.C." (Da Capo).

# "FAREWELL TO LOCHABER"

Musical notation for "FAREWELL TO LOCHABER" in F major, 2/4 time. The piece consists of three staves. The first staff begins with a treble clef, a key signature of one flat (F major), and a 2/4 time signature. The melody is primarily composed of quarter and eighth notes. The second and third staves continue the melody. The piece concludes with a double bar line and the instruction "D.C." (Da Capo).

# "MINUET"

Musical notation for "MINUET" in F major, 3/4 time. The piece consists of two staves. The first staff begins with a treble clef, a key signature of one flat (F major), and a 3/4 time signature. The melody is composed of quarter and eighth notes. The second staff continues the melody and includes first, second, and last endings, marked "1.", "2.", and "last." respectively. The piece concludes with a double bar line and the instruction "D.C." (Da Capo).

Henry Potter & C<sup>o</sup> only address 30, Charing Cross, London. S. W.

RETREATS.  
No 101.

# "SWISS AIR"

E $\flat$  FLUTE.

F. Mc COY.

Musical notation for the first piece, "SWISS AIR". It consists of two staves of music in 2/4 time. The first staff begins with a treble clef and a key signature of one flat. The melody is characterized by eighth-note patterns. The piece concludes with two first and second endings.

# "FAREWELL TO LOCHABER"

Musical notation for the second piece, "FAREWELL TO LOCHABER". It consists of three staves of music in 2/4 time. The first staff begins with a treble clef and a key signature of one flat. The melody features a mix of eighth and sixteenth notes. The piece concludes with two first and second endings, followed by the instruction "D.C." (Da Capo).

# "MINUET"

Musical notation for the third piece, "MINUET". It consists of two staves of music in 3/4 time. The first staff begins with a treble clef and a key signature of two sharps. The melody is composed of eighth and sixteenth notes. The piece concludes with two first and second endings, followed by the instruction "last." (last ending).

HENRY POTTER & CO. only address 36 & 38, West St: Charing  $\times$  Road, LONDON. w.c.

RETREATS.

# "SWISS AIR"

N<sup>o</sup>. 101.

B $\flat$  BASS FLUTE.

F. MC COY.

Two staves of musical notation for the piece "SWISS AIR". The first staff is in 3/4 time and the second is in 2/4 time. Both staves feature a key signature of one flat (B $\flat$ ). The first staff concludes with two first and second endings. The second staff concludes with two first and second endings, followed by the instruction "D.C." (Da Capo).

# "FAREWELL TO LOCHABER"

D.C.

Three staves of musical notation for the piece "FAREWELL TO LOCHABER". The first staff is in 3/4 time and the second is in 2/4 time. Both staves feature a key signature of one flat (B $\flat$ ). The first staff concludes with two first and second endings. The second staff concludes with a "last." ending. The third staff concludes with a "last." ending, followed by the instruction "D.C." (Da Capo).

# "MINUET"

D.C.

Two staves of musical notation for the piece "MINUET". The first staff is in 3/4 time and the second is in 2/4 time. Both staves feature a key signature of one sharp (F $\sharp$ ). The first staff concludes with two first and second endings. The second staff concludes with three first, second, and last endings, followed by the instruction "D.C." (Da Capo).

Henry Potter & C<sup>o</sup> only address 30, Charing Cross, London. S. W.

No 101.

# RETREATS.

"SWISS AIR," "FAREWELL TO LOCHABER," "MINUET"

To Commence.

SIDE DRUM.

F. M<sup>c</sup> COY.

Side Drum notation, measures 1-10. The first line shows a treble clef with a 4/4 time signature and a forte (*ff*) dynamic. It contains three measures with notes and rests, each marked "B.D." below. The second line continues with a piano (*p*) dynamic and features a *ff* *Divisi. alternately.* instruction. The third line is labeled "Finish only." and includes a repeat sign and a "B.D." marking. Below the third line is the instruction "Repeat as often as required."

To Commence.

BASS DRUM.

Bass Drum notation, measures 1-10. The first line shows a bass clef with a 4/4 time signature and a forte (*ff*) dynamic. It contains two measures with notes and rests, each marked "B.D." below. The second line continues with a piano (*p*) dynamic. The third line is labeled "Finish only." and includes a repeat sign. Below the third line is the instruction "Repeat as often as required."

Henry Potter & C<sup>o</sup> only address 30, Charing Cross, London .S. W.