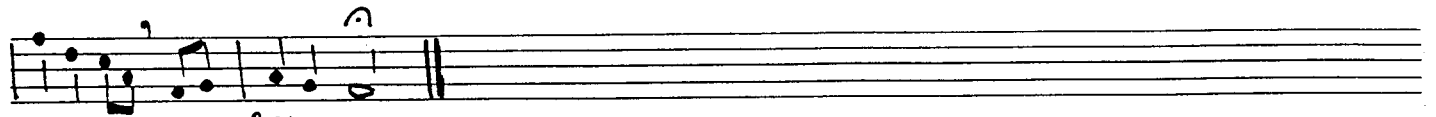
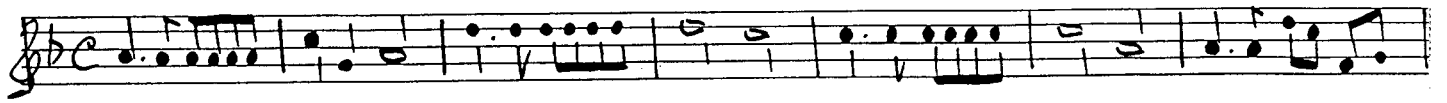


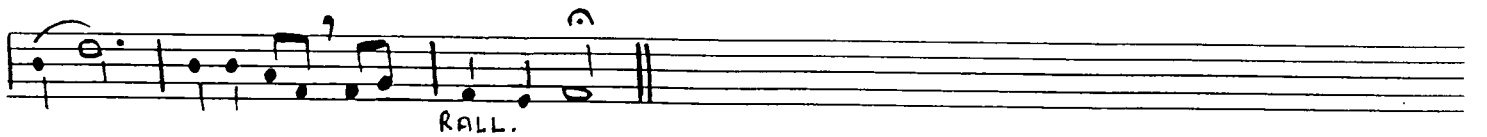
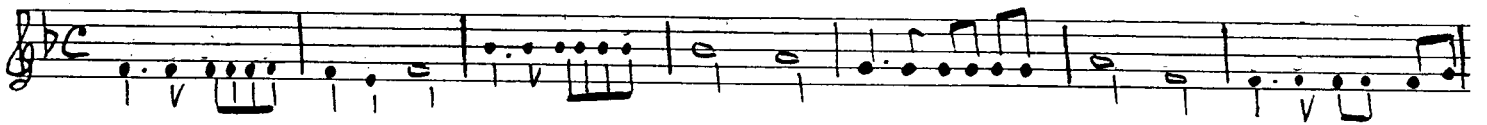
1st G

"TILL WE MEET AGAIN"



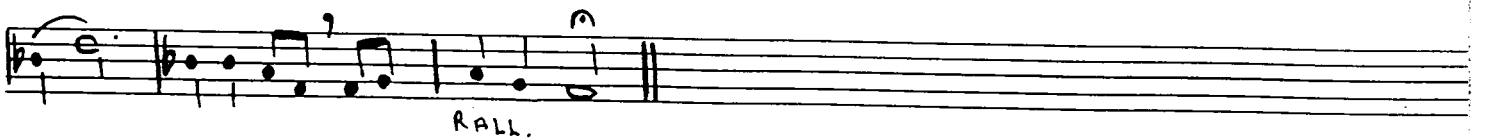
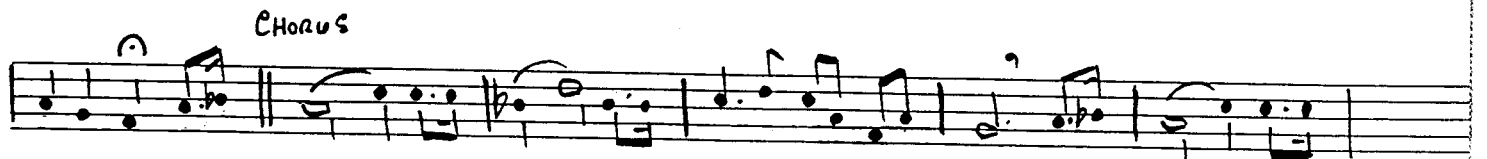
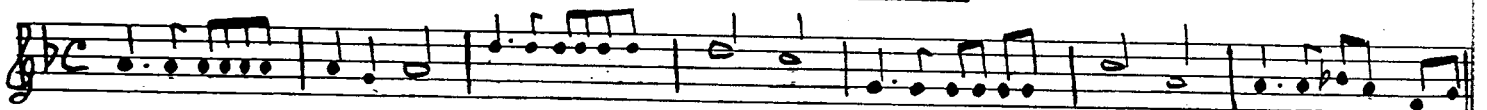
2ND G

"TILL WE MEET AGAIN"



3rd G

"TILL WE MEET AGAIN"

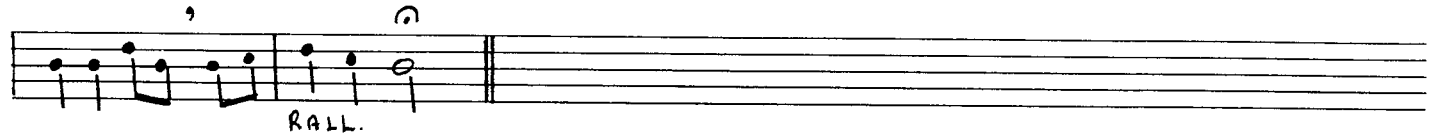


Solo F FLUTE

" TILL WE MEET AGAIN "

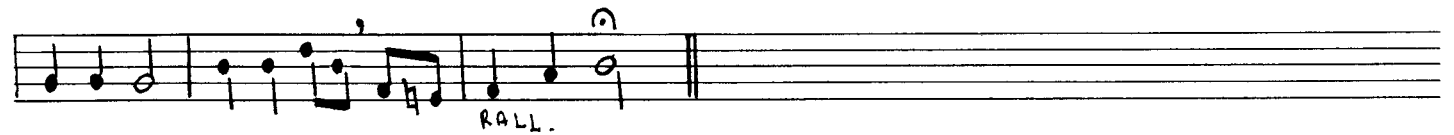


CHORUS



F FLUTE

" TILL WE MEET AGAIN "



Solo Con.

"TILL WE MEET AGAIN"

Handwritten musical notation for the Solo Con. part, first line. It features a treble clef, a key signature of one flat (B-flat), and a common time signature (C). The melody consists of eighth and sixteenth notes, with some rests and a final measure containing a sharp sign.

CHORUS

Handwritten musical notation for the Solo Con. Chorus, first line. It features a treble clef, a key signature of one flat, and a common time signature. The melody is marked with a fermata and a slur.

Handwritten musical notation for the Solo Con. Chorus, second line. It features a treble clef, a key signature of one flat, and a common time signature. The melody is marked with a fermata and a slur.

RALL.

1<sup>ST</sup> Con

"TILL WE MEET AGAIN"

Handwritten musical notation for the 1st Con. part, first line. It features a treble clef, a key signature of one flat, and a common time signature. The melody consists of eighth and sixteenth notes, with some rests and a final measure containing a sharp sign.

CHORUS

Handwritten musical notation for the 1st Con. Chorus, first line. It features a treble clef, a key signature of one flat, and a common time signature. The melody is marked with a fermata and a slur.

Handwritten musical notation for the 1st Con. Chorus, second line. It features a treble clef, a key signature of one flat, and a common time signature. The melody is marked with a fermata and a slur.

RALL.

CON 2 (E $\flat$ )

"TILL WE MEET AGAIN"

Handwritten musical notation for the Con 2 part, first line. It features a treble clef, a key signature of two flats (E-flat and B-flat), and a common time signature. The melody consists of eighth and sixteenth notes, with some rests and a final measure containing a sharp sign.

CHORUS

Handwritten musical notation for the Con 2 Chorus, first line. It features a treble clef, a key signature of two flats, and a common time signature. The melody is marked with a fermata and a slur.

Handwritten musical notation for the Con 2 Chorus, second line. It features a treble clef, a key signature of two flats, and a common time signature. The melody is marked with a fermata and a slur.

RALL.

BASS B<sup>b</sup> (ALTO) TILL WE MEET AGAIN

Handwritten musical score for Bass B<sup>b</sup> (Alto) of the song "Till We Meet Again". The score is written on three staves. The first staff begins with a treble clef, a key signature of one flat (B<sup>b</sup>), and a common time signature (C). The music consists of a series of eighth and sixteenth notes, with some chords indicated by vertical lines below the notes. A circled "C" above the first staff is labeled "CHORUS". The second staff continues the melody, featuring a double bar line and a circled "C" above the staff. The third staff concludes the piece with a double bar line and the instruction "RALL." written below the staff.

CE Bass. TILL WE MEET AGAIN

Handwritten musical score for CE Bass of the song "Till We Meet Again". The score is written on three staves. The first staff begins with a treble clef, a key signature of one flat (C), and a common time signature (C). The music consists of a series of eighth and sixteenth notes, with some chords indicated by vertical lines below the notes. A circled "C" above the first staff is labeled "CHORUS". The second staff continues the melody, featuring a double bar line and a circled "C" above the staff. The third staff concludes the piece with a double bar line and the instruction "RALL." written below the staff.