

RETREATS.

SANTA LUCIA.

E \flat PICCOLO.

Arr: by F. M^o COY.

No 93

D.C.

JENNY JONES.

D.C. &

Henry Potter & C^o

RETREATS.

SANTA LUCIA.

N^o 93.

1st B \flat FLUTE.

Arr: by F. M^c COY.

N^o 93

JENNY JONES.

D.C.S.

Henry Potter & C^o only address 36/38, West St. Charing \times Road, London. W.C.

RETREATS.

SANTA LUCIA.

2nd B \flat FLUTE.

Arr: by F. M \acute{e} COY.

No 93



Musical notation for the first system of 'Santa Lucia', consisting of a single staff in treble clef with a key signature of one sharp (F#) and a 2/4 time signature. The melody begins with a quarter note G4, followed by quarter notes A4, B4, and C5. The piece concludes with a double bar line and repeat dots.

D.C.

JENNY JONES.



Musical notation for the first system of 'Jenny Jones', consisting of a single staff in treble clef with a key signature of one sharp (F#) and a 2/4 time signature. The melody features a first ending bracket over the final two notes, marked '1.'.



Musical notation for the second system of 'Jenny Jones', consisting of a single staff in treble clef with a key signature of one sharp (F#) and a 2/4 time signature. It features a second ending bracket over the first two notes, marked '2.'.



Musical notation for the third system of 'Jenny Jones', consisting of a single staff in treble clef with a key signature of one sharp (F#) and a 2/4 time signature. The piece concludes with a double bar line and repeat dots.

D.C.

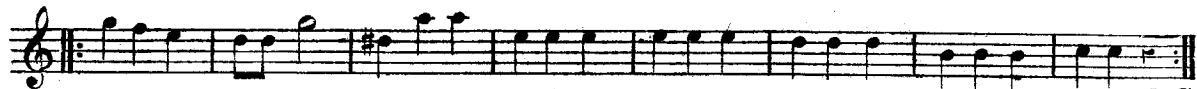
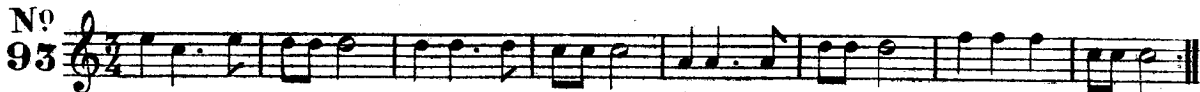
HENRY POTTER & CO. only address 36 & 38, West St: Charing \times Road, LONDON. W. C.

RETREATS.

SANTA LUCIA.

3rd B \flat FLUTE.

Arr: by F. M^c COY.



D.C.

JENNY JONES.



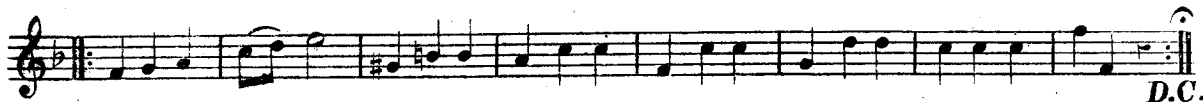
Henry Potter & C^o

RETREATS.

SANTA LUCIA.

F FLUTE.

Arr: by F. Mc COY.



D.C.

JENNY JONES.



D.C.S.

HENRY POTTER & CO. only address 36 & 38, West St: Charing \times Road, LONDON. w. c.

RETREATS.
No 93.

SANTA LUCIA.

E \flat FLUTE.

Arr: by F.M^c COY.



JENNY JONES.

Musical notation for the piece 'Jenny Jones'. It consists of three staves of music in treble clef. The key signature has two sharps (F# and C#) and the time signature is 2/4. The first staff begins with a treble clef, a key signature of two sharps, and a 2/4 time signature. The melody is written on a single staff. The second staff begins with a repeat sign and continues the melody. The third staff continues the melody and ends with a double bar line and repeat dots. The text 'D.C.' is written below the final staff.

D.C.

HENRY POTTER & CO. only address 36 & 38, West St: Charing \times Road, LONDON. w.c.

RETREATS.

SANTA LUCIA.

B \flat BASS FLUTE.

Arr: by F. MC COY.

No
93

D.C.

The musical score for 'Santa Lucia' is written for Bass Flute. It consists of two staves. The first staff is in treble clef with a key signature of one flat (B-flat) and a 2/4 time signature. The melody begins with a quarter note G4, followed by quarter notes A4, B4, and C5. The second staff is in bass clef and provides a harmonic accompaniment with chords and single notes. The piece concludes with a double bar line and the instruction 'D.C.' (Da Capo).

JENNY JONES.

D.C.

The musical score for 'Jenny Jones' is written in treble clef with a key signature of one sharp (F#) and a 2/4 time signature. It consists of three staves of music. The first staff contains the main melody, starting with a quarter note G4. The second and third staves provide accompaniment with chords and rhythmic patterns. The piece ends with a double bar line and the instruction 'D.C.' (Da Capo).

Henry Potter & C^o only address 30, Charing Cross, London. S.W.

RETREATS.

"SANTA LUCIA" "WILLIAM TELL" "JENNY JONES" "TYROLEAN"

Nos 93 & 94.

SIDE DRUM.

Arr: by F. Mc COY.



Divisi.



BASS DRUM.



Solo.



Henry Potter & Co only address 36/38, West St: Charing Road, London, W. C.