

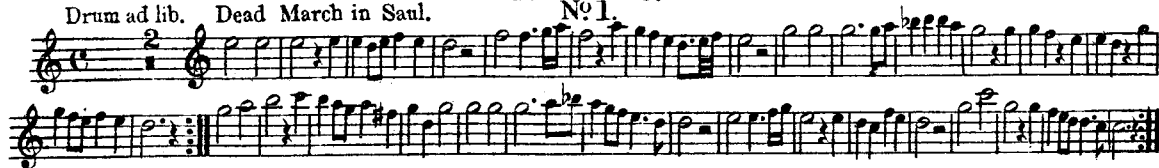
No 33.

FUNERAL MARCHES AND HYMNS.

Drum ad lib. Dead March in Saul.

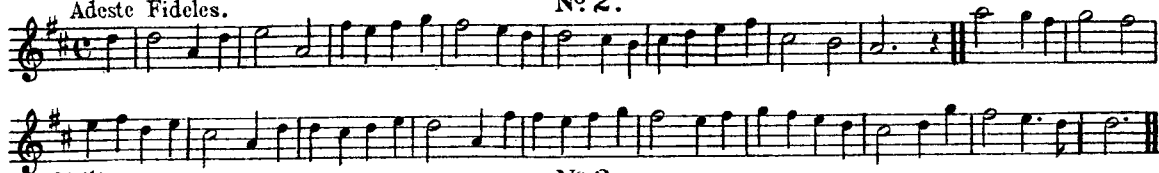
E♭ PICCOLO.

No 1.



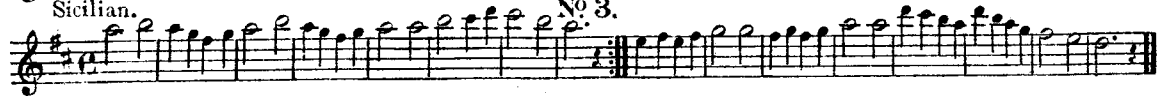
Adeste Fideles.

No 2.



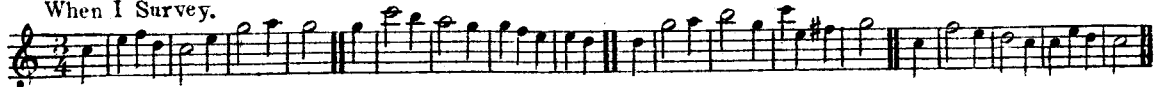
Sicilian.

No 3.



HYMNS FOR CHURCH SERVICE.

When I Survey.



Onward Christian Soldiers.



Henry Potter & Co only address 36/38, West St: Charing Road, London. W. C.

FUNERAL MARCHES AND HYMNS.

No 33.

1st FLUTE B \flat .

Arr: by D. PARFITT.

Drum ad lib. Dead March in Saul.

Musical notation for 'Dead March in Saul' in 2/4 time, featuring a drum part (ad lib.) and a flute part (B-flat). The piece is in a minor key and consists of two staves of music.

Adeste Fidelis.

Musical notation for 'Adeste Fidelis' in 3/4 time, featuring a flute part (B-flat). The piece is in a major key and consists of two staves of music.

Sicilian.

Musical notation for 'Sicilian' in 3/4 time, featuring a flute part (B-flat). The piece is in a major key and consists of two staves of music.

When I Survey.

HYMNS FOR CHURCH SERVICE.

Musical notation for 'When I Survey' in 3/4 time, featuring a flute part (B-flat). The piece is in a major key and consists of two staves of music.

Onward Christian Soldiers.

Musical notation for 'Onward Christian Soldiers' in 3/4 time, featuring a flute part (B-flat). The piece is in a major key and consists of two staves of music.

Henry Potter & Co only address 36/38, West St: Charing * Road, London. W. C.

No 33.

FUNERAL MARCHES & HYMNS.

Drum ad lib.

Dead March in Saul.

2nd FLUTE B \flat .

Arr. by D. Parfitt.

Musical notation for 'Dead March in Saul' for 2nd Flute B \flat . It consists of three staves of music in 2/4 time, featuring a somber melody with many dotted rhythms and rests.

Adeste Fidelis.

Musical notation for 'Adeste Fidelis' for 2nd Flute B \flat . It consists of two staves of music in 4/4 time, featuring a steady, rhythmic melody.

Sicilian.

Musical notation for 'Sicilian' for 2nd Flute B \flat . It consists of two staves of music in 3/4 time, featuring a characteristic waltz-like melody.

When I Survey.

HYMNS FOR CHURCH SERVICE.

Musical notation for 'When I Survey' for 2nd Flute B \flat . It consists of one staff of music in 4/4 time, featuring a simple, hymn-like melody.

Onward Christian Soldiers.

Musical notation for 'Onward Christian Soldiers' for 2nd Flute B \flat . It consists of two staves of music in 4/4 time, featuring a strong, rhythmic melody.

Henry Potter & Co only address 36/38, West St: Charing * Road, London. W. C.

No. 33.

FUNERAL MARCHES AND HYMNS.

Drum

ad lib.

Dead March in Saul.

3rd FLUTE.

Arranged by
D. PARFITT.

1. Musical notation for the first piece, 'Dead March in Saul'. It consists of three staves of music in 2/4 time, featuring a somber melody with many rests and a final cadence.

Adeste Fideles.

2. Musical notation for the second piece, 'Adeste Fideles'. It consists of two staves of music in 2/4 time, featuring a lively, rhythmic melody.

Sicilian.

3. Musical notation for the third piece, 'Sicilian'. It consists of one staff of music in 3/4 time, featuring a slow, waltz-like melody.

HYMNS FOR CHURCH SERVICE.

When I Survey.

Musical notation for the hymn 'When I Survey'. It consists of one staff of music in 2/4 time, featuring a simple, hymn-like melody.

Onward Christian Soldiers.

Musical notation for the hymn 'Onward Christian Soldiers'. It consists of three staves of music in 2/4 time, featuring a strong, rhythmic melody.

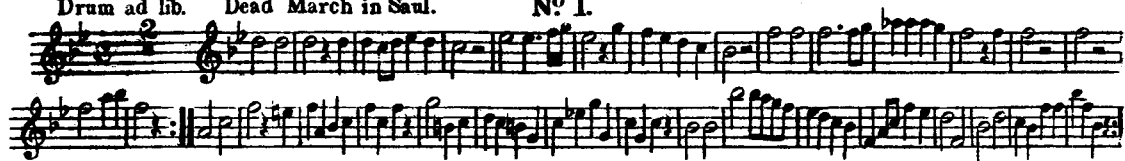
FUNERAL MARCHES & HYMNS.

No 33.

F FLUTE.

Drum ad lib. Dead March in Saul.

No 1.



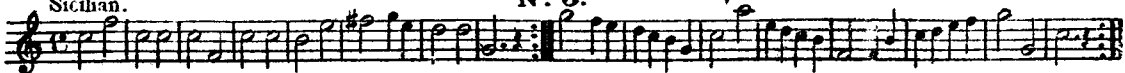
Adeste Fideles.

No 2.



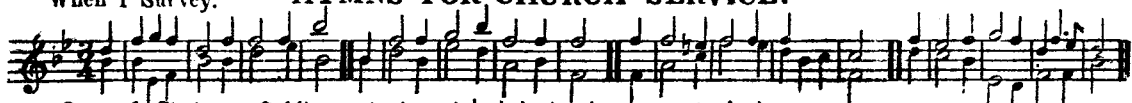
Sicilian.

No 3.

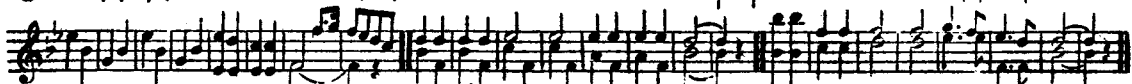
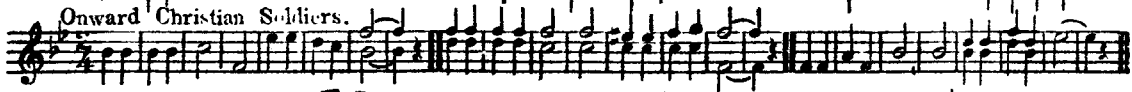


When I Survey.

HYMNS FOR CHURCH SERVICE.



Onward Christian Soldiers.



Henry Potter & Co only address 36/38, West St Charing Road, London. W.C.

FUNERAL MARCHES AND HYMNS.

No 33.

Drum ad lib. Dead March in Saul.

E♭ FLUTE.

Arr: by D. Parfitt.

Musical notation for 'Dead March in Saul' in E-flat major, 2/4 time. It consists of three staves of music. The first staff begins with a treble clef, a key signature of one flat (E-flat), and a 2/4 time signature. The music is written in a single melodic line.

Adeste Fidelis.

Musical notation for 'Adeste Fidelis' in E major, common time (C). It consists of two staves of music. The first staff begins with a treble clef, a key signature of two sharps (E major), and a common time signature. The music is written in a single melodic line.

Sicilian.

Musical notation for 'Sicilian' in E major, common time (C). It consists of two staves of music. The first staff begins with a treble clef, a key signature of two sharps (E major), and a common time signature. The music is written in a single melodic line.

When I Survey.

HYMNS FOR CHURCH SERVICE.

Musical notation for 'When I Survey' in E major, 2/4 time. It consists of two staves of music. The first staff begins with a treble clef, a key signature of two sharps (E major), and a 2/4 time signature. The music is written in a single melodic line.

Onward Christian Soldiers.

Musical notation for 'Onward Christian Soldiers' in E major, 2/4 time. It consists of two staves of music. The first staff begins with a treble clef, a key signature of two sharps (E major), and a 2/4 time signature. The music is written in a single melodic line.

HENRY POTTER & CO. only address 36 & 38, West-St. Charing * Road, LONDON. W.C.

FUNERAL MARCHES and HYMNS

H. POTTER & CO. 36 & 38 West St: Charing Cross Road, LONDON. W.C.2.
 MANUFACTURERS OF DRUMS: FLUTES: BUGLES:
 ALSO REPAIRS

B \flat BASS FLUTE

Arr. by D. PARFITT

Dead March in "SAUL"

2

Drums ad lib.

The musical score for 'Dead March in SAUL' is written for Bass Flute. It begins with a treble clef, a key signature of one flat (B-flat), and a 2/4 time signature. The piece starts with a dynamic marking of '2' (piano) and a '2' above the first measure. The notation consists of two staves. The first staff contains the main melody, and the second staff contains a bass line. The piece concludes with a double bar line and repeat dots.

ADESTE FIDELIS

The musical score for 'ADESTE FIDELIS' is written for Bass Flute. It features a treble clef, a key signature of one sharp (F#), and a 2/4 time signature. The notation consists of two staves. The first staff contains the main melody, and the second staff contains a bass line. The piece concludes with a double bar line and repeat dots.

SICILIAN

The musical score for 'SICILIAN' is written for Bass Flute. It features a treble clef, a key signature of one sharp (F#), and a 3/4 time signature. The notation consists of two staves. The first staff contains the main melody, and the second staff contains a bass line. The piece concludes with a double bar line and repeat dots.

Hymns for Church Service

WHEN I SURVEY

The musical score for 'WHEN I SURVEY' is written for Bass Flute. It features a treble clef, a key signature of one flat (B-flat), and a 3/4 time signature. The notation consists of two staves. The first staff contains the main melody, and the second staff contains a bass line. The piece concludes with a double bar line and repeat dots.

ONWARD, CHRISTIAN SOLDIERS

The musical score for 'ONWARD, CHRISTIAN SOLDIERS' is written for Bass Flute. It features a treble clef, a key signature of one flat (B-flat), and a 3/4 time signature. The notation consists of two staves. The first staff contains the main melody, and the second staff contains a bass line. The piece concludes with a double bar line and repeat dots.

No 33.

FUNERAL MARCHES AND HYMNS.

No 1. Dead March in Saul.

SIDE DRUM.

Musical score for 'Dead March in Saul' for Side Drum. It consists of two staves of music. The first staff is in treble clef with a common time signature (C). The second staff is in bass clef. The music features a series of rhythmic patterns, including dotted rhythms and eighth notes, with wavy lines above the notes indicating a tremolo or 'roll' effect.

No 2. Adeste Fideles.

No 3. Sicilian.

Musical score for 'Adeste Fideles' and 'Sicilian'. It consists of a single staff of music in treble clef with a common time signature (C). The piece is divided into two sections. The first section, 'Adeste Fideles', begins with a piano (*p*) dynamic and a forte (*f*) dynamic. The second section, 'Sicilian', is in a different key signature and features a slower, more melodic line.

Onward Christian Soldiers. HYMNS FOR CHURCH SERVICE.

Musical score for 'Onward Christian Soldiers'. It consists of four staves of music. The first staff is in treble clef with a 2/4 time signature and a piano (*p*) dynamic. The subsequent staves continue the melody and accompaniment, featuring a mix of eighth and sixteenth notes, with some sections marked with a forte (*f*) dynamic.

FUNERAL MARCHES AND HYMNS.

Dead March in Saul.

Side Drum.

1st Flute.

BASS DRUM.

Musical score for 'Dead March in Saul' featuring Side Drum, 1st Flute, and Bass Drum. The score consists of three staves. The first staff is for the Side Drum, the second for the 1st Flute, and the third for the Bass Drum. The music is in common time (C) and begins with a key signature of one flat (B-flat). The piece features a series of rhythmic patterns, including eighth and sixteenth notes, and rests.

Adeste Fideles.

Musical score for 'Adeste Fideles' in common time (C). The score consists of two staves. The first staff is for the vocal line, starting with a six-measure rest followed by a melody. The second staff is for the piano accompaniment, starting with a six-measure rest followed by a bass line. Dynamics include *f* (forte) and *f* (forte). The piece concludes with a ten-measure rest.

When I Survey.

HYMNS FOR CHURCH SERVICE.

SILENT

Onward Christian Soldiers.

Musical score for 'Onward Christian Soldiers' in 2/4 time. The score consists of three staves. The first staff is for the vocal line, starting with a piano (*p*) dynamic. The second staff is for the piano accompaniment. The third staff is for the organ or another instrument, starting with a mezzo-forte (*mf*) dynamic. The piece features a steady rhythmic pattern of eighth notes.